

ABBNEY  
COLLEGE  
CAMBRIDGE



ACCESS **YOUR** FUTURE

PROSPECTUS 2021/22







# CONTENTS

---

Welcome	4
Why Abbey College Cambridge?	6
Abbey College Cambridge	8
What's Included	10
GCSE	12
Academic Preparation	15
A Level	16
Internacional Foundation Programme	20
Academic Support	22
Abbey Inspires	25
Pastoral Support	26
Boarding at ACC	28
Living in Cambridge	32
Abbey Life / Sample Timetable	34
Extra Curricular	36
Results & Destinations Highlights 2020	40
Application Process / Visa Support	42
Applying for a Visa	44
Term Dates	46
Course Fees	48
Accomodation Fees	50
Apply Now	52



# WELCOME

---

**"At Abbey College Cambridge we look for three things in students;  
Ambition, passion, determination.**

These are the qualities that make our students stand out from the crowd. The ambition to aim for a place at a top university, a passion for your subject that extends beyond the traditional syllabus, and a determination to keep pushing forward when times get tough.

At Abbey College Cambridge we specialise in teaching international students, and every year we accept students from a diverse range of cultural and academic backgrounds.

We bring together students from more than 40 countries to form a truly special learning community here in Cambridge. A place where students are able to live, learn, thrive and succeed together.

As a result, every year Abbey Cambridge students achieve extraordinary academic results and progress on to study at many of the UK and indeed the world's best universities."

**Dr Julian Davies**

Principal





# WHY ABBEY COLLEGE CAMBRIDGE?



**82%**  
A\* A LEVEL GRADES  
ACHIEVED IN 2020



**ONE OF THE UK'S  
TOP PERFORMING  
INTERNATIONAL  
COLLEGES**

**73**

STUDENTS  
ACCEPTED TO  
**OXBRIDGE**  
IN RECENT YEARS



**300+**

STUDENTS TO  
**TOP 5 UNIVERSITIES**  
SINCE 2010



**1 IN 2**

FOUNDATION  
STUDENTS JOINED A  
**RUSSELL GROUP**  
UNIVERSITY IN 2020



**40%**

OF A LEVEL STUDENTS  
**PROGRESS TO TOP 5  
UK UNIVERSITIES**  
IN 2020

**88%**

**MEDICINE  
ADMISSIONS**

SUCCESS RATE IN 2020



**INTERNATIONAL  
FOUNDATION  
PROGRAMME**  
OVERALL RESULT 2020



# QUALITY BOARDING IN THE **WORLDS** **MOST PRESTIGIOUS** **UNIVERSITY CITY**



**ON AND OFF  
CAMPUS  
BOARDING  
OPTIONS**



**INSPIRING  
ACADEMIC  
ATMOSPHERE**

**COMMON  
ROOMS AND  
SOCIAL AREAS**



**95%  
SINGLE  
EN SUITE ROOMS**

**WELCOMING CITY  
STUDENT CULTURE  
WITH A DIVERSE  
COMMUNITY**



**ACCESS TO  
CAMBRIDGE  
UNIVERSITY  
LECTURES  
AND TALKS**





# ABBHEY COLLEGE CAMBRIDGE

## Your pathway to an elite university

Since its foundation in 1994, Abbey College Cambridge has developed a reputation for academic excellence. As Cambridge's leading international college, we are experts in teaching and supporting international students, and we do so in a community that is energised by the love of learning.

Abbey Cambridge students stand out from the crowd. Alongside their outstanding academic success, our unique Pre-Degree Diploma Programme ensures that they have the best possible preparation for their future university studies. It's just one of the reasons why admissions tutors at the UK's top universities recognise the quality of the education we provide.

At Abbey College Cambridge students make friends from all over the world, share unforgettable experiences and go on to achieve amazing things together.





**“CAMBRIDGE HAS A  
VERY STRONG ACADEMIC  
VIBE. IT’S A PRIVILEGE TO  
STUDY HERE WITH THE  
CLEVEREST STUDENTS  
AND PROFESSORS IN  
THE WORLD.”**

**Jacky from Taiwan**

A Level student now studying Medicine at  
the University of Cambridge.

**ABBEY  
COLLEGE  
CAMBRIDGE**

# WHATS INCLUDED?



CONFIRMATION OF  
**ACCEPTANCE**  
FOR STUDIES [CAS]

ACADEMIC ENGLISH  
**ADMISSIONS TEST**



**APPLICATION**  
AND SUPPORT



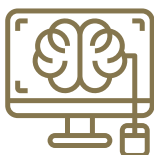
**INDUCTION**  
PROGRAMME



**TEXTBOOKS**



**PERSONAL**  
**TUTORS**



STUDENT EMAIL ACCOUNT  
AND ACCESS TO  
**LEARNING**  
**SOFTWARE**

**WIFI ACCESS**  
IN COLLEGE AND  
BOARDING HOUSES



**ACADEMIC**  
**ENGLISH**



WHEN YOU STUDY AT ABBEY COLLEGE CAMBRIDGE THE FOLLOWING  
RESOURCES AND SERVICES ARE INCLUDED IN YOUR TUITION FEES

**AFTER SCHOOL AND  
WEEKEND CLUBS  
AND ACTIVITIES**



**NATIVE  
LANGUAGE**  
A LEVEL SUPPORT  
AND EXAM ENTRY

**UCAS AND  
UNIVERSITY**  
APPLICATION SUPPORT



**ACCOMMODATION  
DURING HALF-TERM  
AND EASTER HOLIDAYS**



**SPECIAL  
EDUCATIONAL NEEDS  
SUPPORT**

**ENTRANCE**  
TO ACADEMIC CHALLENGES  
AND COMPETITIONS



GCSE, A LEVEL AND IFP  
**EXAM FEES**



**SPECIALIST  
UNIVERSITY APPLICATION  
PREPARATION**

SUBJECT RELATED  
**TRIPS**





# GCSE

**General Certificates of Secondary Education (GCSE) represent the first stage on the path to study at a UK university. Many institutions will ask for at least 5 GCSE passes for entry.**

## Why study GCSEs?

Depending on the duration of studies, GCSE students will take between 6-8 subjects. GCSEs provide a great 'grounding', offering students a wide breadth of subjects, time to familiarise themselves with the UK education system and improve their English (English Language is a compulsory GCSE subject).

GCSEs also provide a natural pathway to A Levels, and students who have taken them tend to perform better in higher level examinations.

## How are they taught?

GCSE course content is broken up into units, each unit is taught in a linear structure, with an emphasis on understanding the connection between topics within the wider context of the subject.

Subjects taught at GCSE at Abbey College Cambridge are; Art and Design, Biology, Business Studies, Chemistry, Economics, English Language, Maths, Further Maths, History and Physics. Also offer a Sport Science qualification with is equivalent to a GCSE.

### Assessment

GCSEs are assessed by an end of course exam. Some subjects will also be assessed by coursework.





## GCSE COURSE DURATION AND START DATES

COURSE DURATION	START DATES
One Year GCSE Programme	September Start, IELTS 5.0
18 Month GCSE Programme	January Start, IELTS 4.5
Two Year GCSE Programme	September Start, IELTS 4.5



**“AT ABBEY COLLEGE CAMBRIDGE I HAVE BECOME MORE ORGANISED AND MY ENGLISH HAS IMPROVED. CAMBRIDGE IS A UNIVERSITY CITY, AND EVERYTHING HERE IS DESIGNED TO HELP YOU FOCUS ON YOUR STUDIES. TEACHERS WERE VERY PATIENT AND HELPED ME WITH EVERY QUESTION WHEN I STRUGGLED, AND THEY GAVE ME A LOT OF PAST PAPERS TO PRACTICE.”**

**Elizaveta from Belarus**

Course: GCSE - Subjects: Business Studies 8, Chemistry 9, Economics 8, English Language 8, Mathematics 8, Physics 9

Destination: GCSE student, now studying A Levels at Abbey College Cambridge



# PRE SESSIONAL PROGRAMME

**Our Pre Sessional Programme is designed to raise a student's ability and prepare them to join one of our academic programmes.**

Dependent on the level of language and academic abilities, our Pre-Sessional a Programme can be taught for one, two or three terms. As well a strengthening English language and academic skills, we will prepare students to learn in a typical British classroom environment. This includes skill development in areas such as pair work, project work, independent reading, discussion work and team building. Physical Education (PE) and Personal Health and Social Education (PHSE) also form part of our preparatory curriculum.





# A LEVEL

**Advanced Level courses, commonly known as 'A Levels' are the most widely recognised qualification for entry to UK universities.**

## **Why study A Levels?**

Most students will take 3 or 4 A Level subjects over the duration of their studies. A Levels offer a good balance between subjects specialisation and choice, allowing students to focus on the subjects that really interest them whilst maintaining breadth of subject choice. A Levels also offer progression the widest range of universities, and are the best options for students looking to join a top-rated university.

## **How are they taught?**

Course content is divided into different sections, and students are encouraged to develop and understand the links between them. Learning is underpinned by the key concepts of the skills of the subject, with a strong focus on practical real world application.

Subjects offered at A Level are: Accounting, Art and Design, Biology, Business Studies, Chemistry, Economics, English Literature, Maths, Further Maths, Geography, History, Physics, Politics, Psychology. Exam only offered for Arabic, Chinese and Russian.

## **Assessment**

A Levels have a linear structure, which means that all exams take place at the end of the final year. Most A Level subjects are assessed by written examination unless the course has a large practical element (such as in art or the sciences).



## A LEVEL COURSE DURATION AND START DATES

COURSE DURATION	START DATES
2 Year Course	September Start
18 Month Course	January Start



**“STUDENTS HERE HELP EACH OTHER THROUGH MOTIVATION AND COMPETITION, AND TEACHERS NURTURE THEIR STUDENTS TO BECOME BETTER. I HAVE NEVER KNOWN SUCH A SUPPORTIVE ENVIRONMENT, I RECEIVED GREAT HELP WHEN APPLYING TO UNIVERSITY AND PREPARING FOR MY FINAL EXAMS. I FEEL MORE READY THAN EVER TO TACKLE THE CHALLENGES I WILL BE FACING AT UNIVERSITY.”**

**Agustin from Uruguay / Italy**

Course: A Level - Subjects: Chemistry A\*, Mathematics A\*, Further Mathematics A\*, Physics A\*  
Destination: Natural Sciences at The University Of Cambridge.





## Focus on Olympiads

At Abbey College Cambridge we believe in challenging our students to achieve beyond the traditional curriculum. Our students have a proud record of success in national and international academic competitions. Students across years 11 – 13 have the opportunity to demonstrate their thinking and problem solving skills beyond the GCSE and A Level curriculum and demonstrate their wider subject knowledge. Success in these events help our students stand out in their university applications.

Agustin was one such student who had astonishing success in the Royal Society of Chemistry's Olympiad Competition.

Agustin excelled in the UK rounds of the competition and was one of four UK students to be selected to represent the UK in the international round of the competition. By being part of the UK team, he received further specialist training on advanced Chemistry topics ahead of the final.

Agustin achieved a gold award at the International Chemistry Olympiad competition. This placed him in the top 25 chemistry students in the world, and also as the top chemistry student in his age group in the United Kingdom.

The College's Chemistry Department has an excellent track record of student success in both the Olympiad and the Cambridge Chemistry Challenge. In 2020 we had 19 students sit the Olympiad across year 12 and 13, with 17 gaining awards – a fairly typical year. In 2019, we had 2 students qualify for round 2 (Agustin being one of them). In the Cambridge Chemistry Challenge, aimed at year 12 students, we usually have at least 20 entries with almost all gaining an award. At least three of the last four years we have had students qualify for the residential course at Cambridge University.

The college has similar success in Biology, Physics and Maths Olympiads as well.



# INTERNATIONAL FOUNDATION PROGRAMME

---

**Our International Foundation Programme (IFP) is an intensive year 13 academic programme that offers international students direct entry to a wide range of UK universities.**

## **Why study International Foundation Programme?**

Unlike many foundation programmes, our destinations are not limited to a choice of one or two partner universities. This means students are free to progress to a wide range of UK universities, including many top 20 ranked and Russell Group institutions.

## **How are they taught?**

The programme offers a range of subject-related pathways, which give access to complementary subjects at university. Each pathway is made up of a number of modules, depending on which pathway you choose you might have a choice of modules, they may be all compulsory, or a mix of elective and compulsory modules.

Foundation Programme Pathways are offered in Business Management and Economics, Engineering, Humanities, Medicine and Science.

## **Assessment**

Each module is assessed individually, with three assessment points through each term. Students will achieve an overall score based on all their individual module assessments.

One year course starting in September.



**“ABBEY COLLEGE CAMBRIDGE PROVIDED VERY GOOD SUPPORT FOR MY STUDIES, ESPECIALLY FROM THE TEACHERS. THEY GAVE ME ADVICE TO IMPROVE MY ORGANISATION AND REVISION TECHNIQUES. I MADE A LOT OF FRIENDS DURING MY TIME AT ABBEY, AND THEY HAVE HELPED TO SUPPORT ME. WHENEVER WE HAD TIME WE WOULD GO OUT AND SPEND TIME IN THE CITY TOGETHER.”**

**William from Angola**

International Foundation Programme: Engineering Pathway - Overall Score: 73%  
Destination: Civil Engineering At The University Of Leeds



# ELITE UNIVERSITY PREPARATION

---

**We offer personalised study support for every student at every level.**

Good grades are just part of a successful application to a top university. Our Elite University Preparation is designed to help you achieve top grades and go beyond the A Level curriculum to strengthen your University Application. Through our stretch programmes such as Pre-Degree Diploma and weekly 'Abbey Inspires' lectures you will explore higher level topics and develop your thinking outside the traditional syllabus whilst refining your university application and preparing for entrance tests and admissions interviews.

## **Academic English**

Non-native English speakers receive up to five hours of academic English support lessons per week. These take place alongside your academic subjects, they are designed to aid your understanding in lessons and to ensure that you meet the level of English required to enter your chosen university.

## **UCAS Support**

UCAS is the Universities and Colleges Admissions Service, who manage the application process for most UK universities. Our Directors of Studies are here to help guide you through the UCAS admissions process, providing advice on completing your application form and writing your personal statement.

## **Specialist University Course Preparation**

If your goal is to gain a place at one of the top UK universities, such as Oxford or Cambridge, or to gain a place on a competitive course such as medicine, dentistry or law, then we offer another layer of preparation on top of the Pre-Degree Diploma.

Our specialist course preparation programme will help you prepare for entrance examinations, additional entrance tests such as UCAT, BMAT and MAT and admissions interviews. For aspiring medics we have a timetabled dedicated Medical Preparation Programme. In the summer of Year 12, we hold our dedicated UCAS fair, which is a week of lectures and small group support sessions designed to ensure you are fully prepared for submitting your UCAS application in the Autumn.

Students wishing to apply to Oxford or Cambridge can apply to attend our Oxbridge Candidate Programme and receive further support from our partner, Leading Education Admission Consultants. These students receive specialist, additional preparation for Oxbridge Application including; enhancing subject knowledge, Entrance Exam preparation and Interview preparation.



**“I ENJOYED LESSONS MOST OF ALL, THEY ARE SO ENGAGING AND INSPIRING! MY TEACHERS HAVE STRETCHED ME SO MUCH, BY SUGGESTING EXTRA WORK AND RESOURCES AND GIVING HELPFUL FEEDBACK WHICH REALLY HELPED TO BROADEN MY KNOWLEDGE.**

**THE PRE-DEGREE DIPLOMA REALLY HELPED ME FIND OUT ABOUT UNIVERSITIES THAT OFFER MY COURSE AND PIN DOWN MY CHOICES FOR APPLICATION, I ALSO LEARNED ABOUT CAREERS AFTER UNIVERSITY.”**

---

**Yiping from China**

Course: A Level - Subjects: History A\*, Mathematics A\*, Psychology A\*  
Destination: Experimental Psychology at The University of Oxford.

# PRE DEGREE DIPLOMA

This happens during your first year of A Level study. You will be preparing your university application and gaining deeper knowledge and skills in the area you want to study to make you stand out from other university applicants. It also incorporates and participation in national and international academic competitions and challenges.



**MEDICINE**



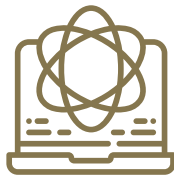
**MATHEMATICS**



**ECONOMICS**



**PHYSICS AND  
ENGINEERING**



**COMPUTER  
SCIENCE**



**ART AND  
DESIGN**



**LAW**



**ARCHITECTURE**



**NATURAL  
SCIENCES**



**BUSINESS  
STRATEGY  
AND LEADERSHIP**



# ABBHEY INSPIRES

Every week we offer a changing programme of evening lectures, practical activities and revision classes as part of our 'Abbey Inspires' programme. Sessions are delivered by our tutors and selected guests from the academic and business worlds. They often focus on contemporary developments or on subjects not covered by the traditional syllabus. Recent events have included:



**INFECTIOUS DISEASE  
AND IMMUNITY  
BIOCHEMISTRY  
AND PLANT PHYSIOLOGY**



**STEM DISSECTION**



**DREAM POETRY  
WORKSHOP**



**ISAAC PHYSICS  
WORKSHOPS**



**QUASARS:  
THE KEY TO THE  
UNIVERSE?**



**ALLIANCE TO ARMADA  
A 1588 ARMADA  
CAMPAIGN ROLE PLAY**



**WHY DO PEOPLE GET  
EATING  
DISORDERS?**



**EXPLORING  
THE BUSINESS OF  
SOCCER**



**MODERN  
AMERICAN POLITICS**



**THE ECONOMICS OF THE  
ART MARKET**



# PASTORAL SUPPORT

**Studying in the UK is an exciting prospect, but might also make you a little nervous too.**

It means leaving your family to start a new life in a new and unfamiliar country, and doing so whilst learning in maybe your second or third language. As experts in teaching international students, we know that the first thing we have to build is a strong and supportive college community. To succeed in your studies, you first need to feel welcome, comfortable and safe.

Life at Abbey College Cambridge revolves around our 7 Abbey Houses; Athena, Apollo, Hera, Juno, Jupiter, Neptune and Zeus. As a new student you will join one of these houses, and earn 'house points' by taking part in weekly activities, challenges and competitions, demonstrating commitment to your studies, attending clubs and sports, and by being helpful to fellow students and staff.

Our house system is designed to encourage healthy competition between students, foster school pride, help you meet friends outside of your normal social groups and improve your English.





## Personal Tutors

You will be allocated a personal tutor who will be an experienced member of our teaching staff who will provide support throughout your studies. You'll meet with them daily as part of your tutor group, and then weekly and termly for in-depth personal guidance and feedback sessions.

## Assemblies

Assemblies are a time when the whole college community comes together to celebrate our successes.

As a student you will be participating regularly in assemblies. You could be singing or playing musical instruments as a member of our 'Abbey Voices' choir or one of our music groups. Our drama club perform pieces, and individual students may read and present work.





# COLLEGE BOARDING

We offer more than 400 student bedrooms in our on and off campus boarding houses and with local host families.

BOARDING HOUSE	ROOM OPTIONS
Abbey House	On-campus accommodation for students aged between 13-16 years. Room options: Standard Single Room, Superior Single Room, Standard Twin Room, Superior Twin Room. Full-board meals.
Purbeck House	Off-campus accommodation for students aged 16–21 years. 2 minute walk from college. Room options: Single Studio Room, Single Apartment, Twin Room. Full-board meals.
Tripos Court	Off-campus accommodation for students aged 16-21 years. 5 minute walk from college. Room options: Standard Single Room, Superior Single Room. Full-board meals.
Orchard House	Off-campus accommodation for students aged 18-21 years. 15 minute walk from college. Room options: Standard Single Room, Superior Single Room. Half-board meals.
Host Family	Our host families provide an opportunity to experience British family life whilst studying. All our host families are located within the city of Cambridge and personally chosen by our Head of Accommodation. Full-board meals.



Included in all boarding options



**WIFI**



**WEEKLY  
LINEN AND  
TOWEL CHANGE**



**ON-SITE  
LAUNDRY**



**COMMUNAL  
AREAS**



**SECURE  
ACCESS**



**SECURE  
BICYCLE  
STORAGE**



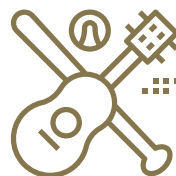
**CCTV AND  
SECURITY**



**LIVE-IN**  
HOUSE PARENTS



**ROOM  
CLEANING**



**WEEKEND AND  
EVENING  
ACTIVITIES**





## Dining

Our college catering team provides our students with daily fresh, nutritious meals and a range of healthy snack options. We also work to educate our students on how to make healthier food choices, and regularly consult with them to tailor menus to suit their tastes and preferences.

Most of our students are accommodated on full board meal plans apart from those living in host families. Full board plan students have breakfast, lunch and dinner seven days a week included in their yearly accommodation fee. Students in host families have breakfast and dinner at home, and take lunch at school Monday- Friday. All students can use their student ID card to make additional individual purchases.



# LIVING IN CAMBRIDGE - THE WORLD'S MOST PRESTIGIOUS UNIVERSITY CITY

---

**A big part of being here is the Cambridge experience.**

Cambridge is a unique fusion of the traditional and the modern, the everyday and the extraordinary, a small English city that has shaped our collective history and continues to influence our future.

For over 800 years the city has been home to the world-famous University of Cambridge. Consistently voted as one of the world's best, the university has produced countless ideas and discoveries that have changed our world, and boasts 120 Nobel laureates. Our students talk of being inspired by the academic atmosphere of the city, and we are able to offer them privileged access to university colleges, faculties and research institutes.

Away from studies, Cambridge is a small, quiet and safe city, it's also one of the UK's most beautiful places. There are enormous range of cultural, leisure and entertainment opportunities within the city and surrounding countryside.





**"THERE IS ALWAYS SOMETHING TO DO IN CAMBRIDGE CITY CENTRE FROM PUNTING, TRYING EXOTIC FOOD TO VISITING THE INTERESTING MUSEUMS, MANY FOR FREE."**

Ian from Malaysia



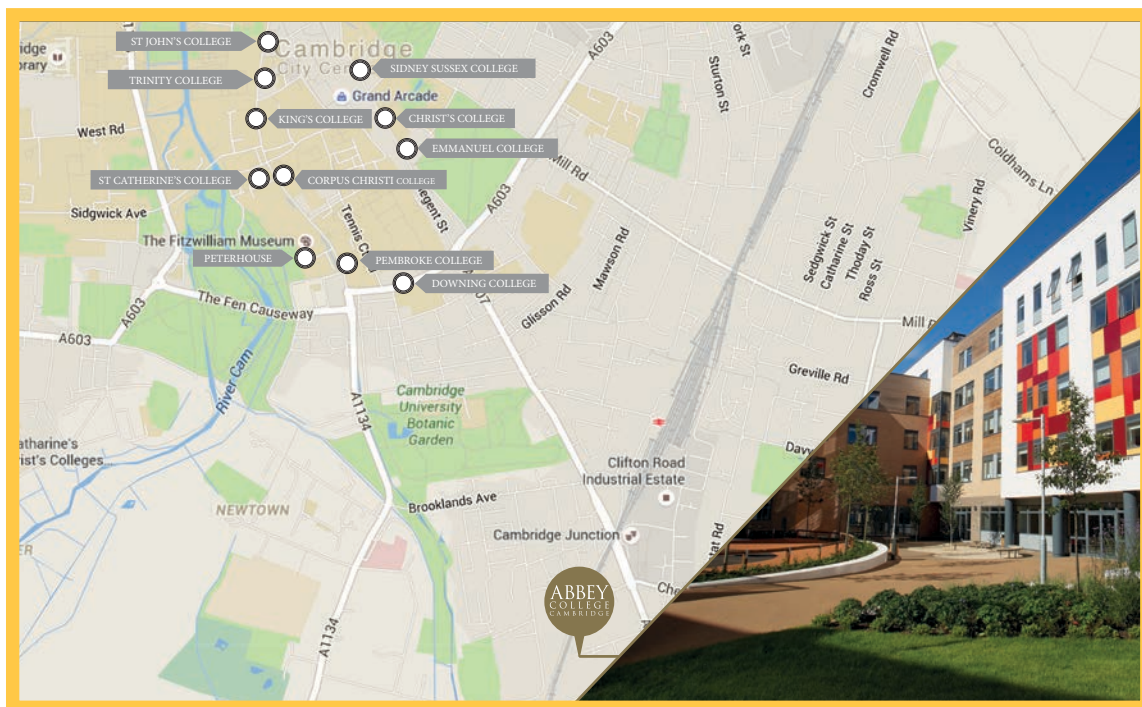
**"IT'S A NICE AND SAFE CITY, THERE ARE MANY STUDENTS HERE WHICH IS GOOD."**

Andrea from Bulgaria



**"CAMBRIDGE IS A LIVELY CITY AND IT IS THE TEMPLE OF SCIENCE. IT IS QUITE AND RELAXING, BUT YOU CAN HAVE FUN WHENEVER YOU WANT. THE RANGE OF MUSEUMS AND HISTORICAL SITES ASSOCIATED WITH GREAT SCIENTISTS IS UNIQUE."**

Farbod from Iran







# ABBHEY LIFE

## SAMPLE TIMETABLE

The college day runs from 9am to 5pm. Breakfast is served from 7.45am to 8.45am. Dinner is served from 4.45pm to 6.30pm. Abbey Inspires events run from 6.30pm until 8pm.

DAILY TIMETABLE*	
Registration (9am - 9.15am)	Personal Tutor
Period 1 (9.20am - 10.05am)	Lesson 1
Period 2 (10.10am - 10.55am)	Lesson 2
MORNING BREAK	
Period 3 (11.15am - 12.00pm)	Lesson 3
Period 4	Lunch
Period 5 (12.50pm - 1.35pm)	Lesson 4
Period 6 (1.40pm - 2.25pm)	Lesson 5
Period 7 (2.30pm - 3.15pm)	Lesson 6
Period 8 (3.25pm - 4.10pm)	Pre Degree Diploma, Clubs, Assembly or PSHEE
Period 9 (4.10pm - 5pm)	Clubs or House Meeting
Events (6.30pm - 8pm)	Abbey Inspires

\*Indicative daily timetable. Subject to change. Lunch may be served alternately from 1pm - 1.50pm.





# EXTRA CURRICULAR

---

Over 50 different extra-curricular clubs and sports activities take place each week, both on and off campus. Clubs are divided into three categories; Action, Belonging and Creativity. You will join at least one of each type, every term. Clubs and sports are fun ways to meet new friends and expand your horizons. They also allow to develop a broad range of interests outside of your studies, something that all top universities look for in applicants.





## Sport

At Abbey College Cambridge we actively encourage all our students to participate in sports to help their physical development and improve their ability to concentrate and work hard in class.

Sports activities and clubs take place every week both on and off campus. Sports and fitness classes available include football, basketball, badminton, swimming, netball, yoga, running, dance and tai chi. Competitive sports fixtures against other schools are organised throughout the year.

All of our Compulsory School Aged (CSA) students take part in weekly physical education classes. Sports are led by a team of professional coaches. Activities are designed to be varied, fun and challenging.

We aim to create a healthy community for our students to learn and socialise in, college sports are a very important part of this.



## Music

At Abbey College Cambridge we offer a range of musical activities designed to suit both experienced musicians and students who may never have picked up an instrument before. We also organise individual music lessons for students. We believe that playing music, being part of a band or singing helps to develop confidence, make new friends and challenge yourself personally whilst learning a new skill and having a lot of fun! Music clubs are part of our Abbey College Cambridge extra-curricular activity programme. By taking part in our music clubs students receive a certification that will enhance their university application. Details of our music clubs can be found on the college website.



## Duke of Edinburgh's Award

The Duke of Edinburgh's Award (commonly known as DofE) is internationally recognised and considered valuable by employers.

Known as the 'Golden A Level', students completing the Silver or Gold awards develop considerable skills in team work, communication and problem solving. 93% of participants believe that having a DofE Award has helped them secure employment or a place at university.

The aim is to inspire, guide and support young people in their self-development and to recognise their achievement. Students gaining the Gold award will be presented with it at one of the Royal Palaces in London.



## Balls and Social Events

Every May we host a Traditional Cambridge May Ball, and every December we host a Christmas Ball. Both events are organised by our students, working in conjunction with our pastoral team. Balls provide a great opportunity to celebrate your time at Abbey College Cambridge before exams and everyone goes home for summer or moves on to university.

At the start of each year we also host a leavers' ceremony to say farewell to our graduating class.

We also hold a yearly Charity Fair. In 2019 our students raised £4,000 for local charity EACH (East Anglian Children's Hospices). The Charity Fair includes games and entertainment for all staff and students.



## Student Council and Leadership

Our Vision for Excellence begins with the words “A community...” like other schools and colleges we have a Student Council. This is a way for you to make your voice heard, and you will be actively involved in the day to day running of the college, speaking on behalf of your fellow students and helping to improve our college community. You will also get to implement new initiatives and help organise social activities like our May and Christmas Balls.

You can also become one of our Abbey Cambridge ‘Student Ambassadors’ helping out at school events, meeting and sharing your experiences with guests from around the world.

Each Tutor Group elects a representative to the student council and regular meetings take place throughout the school year.

**“I THINK THE WAY MY  
TEACHERS HELPED  
ME TO ACHIEVE MY  
BEST WAS SIMPLY BY  
BELIEVING IN ME AND  
ENCOURAGING ME TO  
REALISE THAT I CAN  
DO MUCH MORE.”**

**Tomi from Kazakhstan**

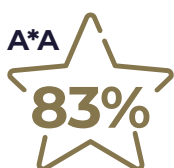
Course: A Level - A Level Subjects: Economics B,  
English Literature A, Politics A, Russian A  
Destination: History, Politics and Economics at  
University College London



# RESULTS AND DESTINATION HIGHLIGHTS 2020

Please see below for a selection of University Destinations from our graduating class of 2020. Full list can be found on our website.

## A LEVELS 2020



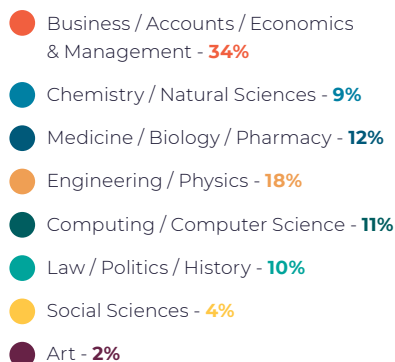
**3 STUDENTS  
ACCEPTED INTO  
OXBRIDGE**

**5 A LEVEL STUDENTS  
PROGRESS TO  
STUDY MEDICINE**

**73%  
PROGRESS TO  
RUSSELL GROUP  
UNIVERSITIES**

**40%  
OF STUDENTS  
PROGRESS TO  
G5 UNIVERSITIES**

**ALL  
G5 UNIVERSITIES  
HAVE ACCEPTED  
ACC STUDENTS**



For more information regarding A Level results and destinations please scan the QR code below using the camera on your smartphone.



## INTERNATIONAL FOUNDATION PROGRAMME 2020



**1 IN 2**

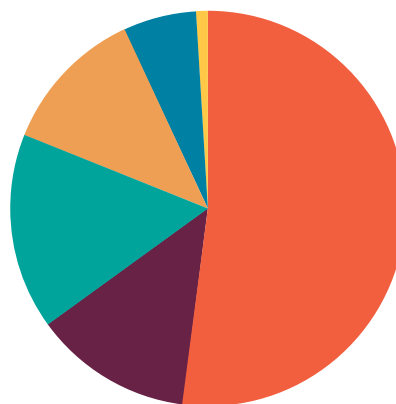
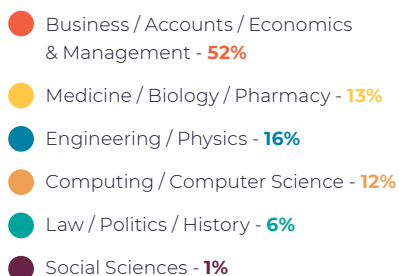
**STUDENTS PROGRESS TO  
RUSSELL GROUP  
UNIVERSITIES**

**OVER 50%**

**OF RUSSELL GROUP  
UNIVERSITIES  
ACCEPTED ACC  
IFP STUDENTS**

**22**

**DIFFERENT  
UK UNIVERSITIES  
ACCEPTED ACC  
IFP STUDENTS**



## GCSE RESULTS 2020



The majority of GCSE students stay at Abbey College Cambridge to complete their A Level study.



# ADMISSIONS

Here at Abbey College Cambridge we have a friendly team to help guide you through the Admissions Process. The College has a team of representatives based around the world, their details can be found on our website or if you wish to contact our International Admissions Team in the UK direct, they can be contacted on [admissions@abbeydld.co.uk](mailto:admissions@abbeydld.co.uk) phone +44 3300 536082.

We do welcome visitors and would be happy to arrange for you to tour the college at a mutually convenient time. Please contact admissions to arrange.

Abbey College Cambridge can sponsor students under both the Child Student and Student visa routes. We can provide you with expert visa advice and assistance on both visa types, and we have successfully helped to guide hundreds of students, parents and agents through the visa application process. Once you have been successfully enrolled, we will provide you with a 'Visa Application Guide'.





# TERM DATES

<b>AUTUMN TERM</b>	
Accommodation opens	Friday 3rd September 2021
Term starts - All new students in Year 10, One Year GCSE, Pre-sessional Year 12 and Year 13 A & IFP students	Monday 6th September 2021
Term starts – All returning students Two Year GCSE, Year 13 A Level & IFP students	Monday 13th September 2021
Half term	Monday 25th – Friday 29th October 2021
Last day of term	Friday 17th December 2021
Accommodation closes	Sunday 19th December 2021
<b>SPRING TERM</b>	
Accommodation opens	Friday 7th January 2022
Lessons start	Monday 10th January 2022
Half term	Monday 14th – Friday 18th February 2022
Last day of term (all except 18 month A Level)	Friday 1st April 2022
<i>Boarding Houses remain open for the Easter Holidays</i>	
<b>SUMMER TERM</b>	
Start of term	Tuesday 19th April 2022
Half term	Monday 30th May – Friday 3rd June 2022
Last day of term IFP Students	Friday 17th June 2022
Last day of term	Wednesday 29th June 2022
Accommodation closes	Friday 1st July 2022









# COURSE FEES

## 2021/22

### NON-EEA TUITION FEES

GCSE	
First Year (2 year programme)	£32,085
First 2 Terms (18 month Programme)	£27,860
One Year Programme (full fee)	£32,085
A LEVEL	
First Year (2 year programme)	£32,085
First 2 Terms (18 month Programme)	£27,860
INTERNATIONAL FOUNDATION PROGRAMME	
One Year Programme (full fee)	£32,085
PRE SESSIONAL	
One Term	£9,115
Two Terms	£18,230
Three Terms	£27,345

## EEA / UK TUITION FEES

<b>GCSE</b>	
First Year (2 year programme)	£25,175
First 2 Terms (18 month Programme)	£20,860
One Year Programme (full fee)	£25,175
<b>A LEVEL</b>	
First Year (2 year programme)	£25,175
First 2 Terms (18 month Programme)	£20,860
<b>INTERNATIONAL FOUNDATION PROGRAMME</b>	
One Year Programme (full fee)	£25,175
<b>PRE SESSIONAL</b>	
One Term	£7,230
Two Terms	£14,460
Three Terms	£21,690

## OTHER FEES

Registration Fee (non-refundable)	£500
Deposit*	£2,000

The above fees include examination fees (except IELTS which are charged at time of entry), textbooks and lab fees. The above prices are per academic year.

\*The deposit will be refunded when the student vacates. Additional expenses (trips etc.) will be deducted from the deposit and the remaining balance refunded on departure. Deposit is non-refundable if student withdraws from the course.

# ACCOMMODATION FEES 2021/22

<b>ABBEY HOUSE</b>	
Standard Single	£23,200 per year
Superior Single	£24,700 per year
Standard Twin	£18,000 per year
Superior Twin	£19,100 per year
<b>PURBECK HOUSE</b>	
Studio	£25,200 per year
Apartment	£26,800 per year
<b>TRIPPOS COURT</b>	
Standard	£20,600 per year
Larger Room	£22,100 per year
<b>ORCHARD HOUSE</b>	
Standard (Half Board)	£17,000 per year
<b>HOST FAMILY</b>	
Range (Half Board)	£10,300 – £15,500 per year









# APPLY NOW

Simply scan the code to apply to study with us.



[www.abbeycambridge.co.uk/admissions/international-application-form](http://www.abbeycambridge.co.uk/admissions/international-application-form)







Abbey College Cambridge  
Homerton Gardens  
Cambridge CB2 8EB  
Tel: +44 (0) 1223 578280  
[www.abbeycambridge.co.uk](http://www.abbeycambridge.co.uk)



Abbey DLD Group of Colleges is part of the Alpha Plus Group Ltd.